



SW001-4147 Statewide

Mops/Brooms

*People First Industries is a
nonprofit providing work for
adults with disabilities.*



Located at:

3324 Enterprise Dr. Durant, OK 74701

www.peoplefirstinc.org

Visit us on Facebook

Purchase with Purpose

PEOPLE FIRST INDUSTRIES OF BRYAN COUNTY, INC.

Working to Make A Difference Since 1978

MOP CARE

After Each Use

- ◆ Rinse a wet mop with clean water and wring it out thoroughly.
- ◆ Take a dust mop head and shake, vacuum, even brush if necessary to completely remove the large particles that cling to it.
- ◆ Launder all mops as needed.

Directions For Laundering

- ◆ Put dust mop heads in a netted bag.
- ◆ Wash in hot water (160 degrees) without bleach or fabric softener for 20 minutes.
- ◆ Never Use fabric softener on a “Microfiber” product.

Storage Of Your Mop

Your mop will last longer if it is thoroughly dried and stored in a dry area. When laundered, dry completely at less than 150 degrees for approximately 18 minutes without fabric softener sheets. Whether cleaned after a use or fully laundered, always hang a wet mop so that fibers face DOWN in a dry area.

Mop Wellness

Mops deteriorate more quickly when they are used inappropriately, when used with excessive amounts of bleach or detergent, when over washed or washed or dried in excessive temperatures. For any of these reasons, or simply when a mop has been used so long that its weight is only 75% of its original weight, it is time for a replacement. Otherwise it will take you 1/3 longer to get the job done.

Dura-Lon Yarn Dust Mops

Dura-Lon yarn launders and dries in half the time of cotton yarns. Simple hand washing with a cold water rinse and drip drying will be enough in most cases. If mops are machine laundered, follow the label directions except do not remove mops from laundry nets when tumble drying.

Caution

Dura-Lon dries quickly. Use lower temperatures and reduce drying times. Bleach will cause severe weakening and deterioration. The use of fabric softeners is NOT recommended.

ACCESSORIES

Product Code: H—5875CDNE Order # H-5875CDNE

15' Magnetic "Caution—Do Not Enter— retractable barrier, powerful magnets fasten to metal, set up in seconds, ABS plastic housing with 2" wide self retracting belt



Units: 1/Each

Case cost: \$135.50

Product code: 6" IRON STYLE SCRUB BRUSH



6" Synthetic bristles, iron style, hand held scrub brush
Color may vary

Units: 1/ each

Cost: \$8.35

Product code: G0964871

Tough Guy, 9" Swivel pad holder, blue, 9"L x 4"W, plastic. 12/Case



Units: 1/ case

Cost: \$81.90

Product code: H-2555 MOP/BROOM HOLDER

Standard mop/broom holder with shelf. Spring-activated rubber clips grasp mops and brooms securely. Powder-coated steel. 4" deep shelf and 5 tool hooks.



Units: 1/ each

Cost: \$83.50

ACCESSORIES



Product code: IMP-9152W Impact Wet Floor Sign

Opens easily with a pinch at the top of the handle. Highly visible yellow with black imprint; can be used with a chain. Folds flat for space saving storage. 11.80" L x 1.35" W x 24.35" H

Units: 1/each Cost: \$15.66

Product code: IMP-9183

Impact Pop-up safety cone. 20" yellow/black, multi-lingual . 4-sided with hang tube



Units: 1/ each Cost: \$31.95



Product code: BBP-510209 PLUNGER

Black toilet plunger with 20" wood handle for both sinks and toilets.

Units: 1/ each Cost: \$13.50

Product code: RDA B7738

RDA B7738 13" handheld black counter brush, black bristles, plastic handle.



Units: 1/ each Cost: \$10.25

Product code: 3GAL TRASH CAN

3 gallon plastic trash can. Accommodates standard trash liners up to 4 gallons.

Units: 1/ each

Cost: \$9.75

**Product code: 540210 SCRATCH BRUSH**

Scratch brush, 4 rows, 11 columns, steel, straight wood handle

Units: 1/ each

Cost: \$9.75



People First Industries strives to turn challenges into accomplishable daily living skills and for our clients to achieve their dreams and desires to live life just like you and me with a good job, good friends, a purpose and the opportunity to give back to their community.

We are a proud vendor of the Oklahoma State Use Program, which is operated by Central Purchasing of the Office of Management and Enterprise Services (OMES).

The program benefits the Oklahoma community by alleviating the public assistance burden the state faces. As a result of the State Use Program, participants' earned income rises, displacing government assistance and reducing the need for state and federal programs.

The State Use Program is a self-supporting program that manages the contracts of People First Industries and provides employment for persons with disabilities. These employment opportunities reduce the need for state and federal funding (averaging \$2,700 per individual). A 1% fee of any contract for products or services of the severely disabled shall be assessed against the qualified organization and deposited in the State Use Committee Revolving Fund, as created in Title 74 Section 3004.2.

All of this provides the state with a 25 percent economic advantage and costs the state nothing.

BROOMS



Product code: BBP-230210 10" DECK BRUSH

10" Boardwalk deck brush head with palmyra bristles.

Units: 1/ each

Cost: \$8.95

Product code: LGSA Order #: 1000032353/36

Black plastic frame and bristle broom with a metal handle

Replacement handles and heads available upon request.

Handle colors may be black or white.



Units: 1/each

Cost: \$15.75



Product code: 403081WM Order #: 1000032940/42

Inmate safe, no wire (twine wound) construction with 6 rows of stitching. Heavy duty 1 1/8" x 58".
6/case

Units: 1/case

Case cost: \$99.50

Product code: 18" Fine Push Broom Head

18" Fine floor push boom made from horse hair for smooth sweeping. Acme thread connection type.

Units: 1/ each

Cost: \$23.25



BROOMS

Product Code: 88305241 Order #: 88305241

24" Multi purpose Red push broom. (Works with TW100 wood handle)

Units: 1/each

Case cost: \$32.50



Product code: 356-24 PUSH BROOM

24" push broom with polypropylene, flagged bristles, brace and hardwood handle.

Units: 1/ each

Cost: \$35.25

Product code: LGSA Replacement Head

LGSA black replacement angle broom head.

Units: 1/each

Cost: \$7.25



Product code: BRW58S

Black wooden handle, synthetic bristle broom. Great to use in areas that get wet.

Units: 1/each

Case cost: \$16.50

BROOMS



Product code: BWK20218

Boardwalk floor brush head 2 1/2" W, black Tampico fibers, 18"L.

Units: 1/ each

Cost: \$24.25

Product code: BWK20224

Boardwalk floor brush head 2 1/2" W, black Tampico fibers, 24"L



Units: 1/ each

Cost: \$23.25

Product code: BWK20236

Boardwalk floor brush head 2 1/2" W, black Tampico fibers, 36"L.



Units: 1/ each

Cost: \$24.25



orders@peoplefirstinc.org for approved orders

info@peoplefirstinc.org for all estimates

Product code: BBP-230212

12" Deck brush, bristles won't soften when used wet.
Preferred for petrochemical spill clean up

**Units: 1/ each****Cost: \$14.25****Product code: FGQ95088YEL**

Rubbermaid Commercial HYGEN charging bucket is a disinfecting bucket designed especially for healthcare cleaning. Holds up to 20 microfiber wet pads. Watertight lid. Accommodates mops up to 18" in length

Units: 1/ each**Cost: \$110.25****Product code: GST—MBU16SEAL-G**

Golden Star 4 gallon microfiber charging bucket. May be placed on any standard maid cart, leak proof lid seals tightly.

**Units: 1/ each****Cost: \$63.00****Product code: IMP-WH6000Y**

Side-press mop wringer features reinforced nylon bearings with a splash guard. Accommodates 12 to 32 oz mops.

Units: 1/ each**Cost: \$79.50**

BUCKETS



Product code: 9053-MB

Institutional wet mop bucket, funnel type wringer uses no moving parts.

Units: 1/ each

Cost: \$139.50

Product code: IMP-414

Galvanized Utility pail, 14 quart. Stainless. Seams reinforced with sealant. Embossed graduations and 1/4" steel rod rim reinforcement

Units: 1/ each

Cost: \$32.99



Product code: IMP26353Y

35-quart plastic mop bucket. 3" inboard casters roll smoothly across floors.



Units: 1/ each

Cost: \$75.50

Product code: O CEDAR SPIN MOP

O Cedar Spin mop removes over 99% of bacteria with water. Microfiber deep cleans and is safe on hardwood floors.

Units: 1/ each

Cost: \$65.75



BUCKETS

Product code: PCB-IMBB

Rubbermaid HYGEN press wring bucket deep cleans without chemicals. 11 gallon bucket with wheels. Rolls easily on non-marking casters

Units: 1/ each

Cost: \$99.50



Product code: BUCKET Order #: 1000033622/54

35 Quart yellow mop bucket with wringer and casters. Perfect for a variety of settings.

Units: 1/ each

Case cost: \$69.50



DUST MOPS



Product code: SP365HS Order #: 1000030768/18

This is a 36X5 Professional dust mop. Our dust mops are constructed for intensive laundering and use. These high performance dust mops are pre-laundered and ready to use.

Units: 12/case

Case cost: \$155.00

Product code: SGR245 Order #: 1000031144/20

This is a 24X5 Microfiber dust mop. It is made with synthetic blend yarn with looped ends to allow for more effective dry mopping. Air dries 100% overnight. No minimum case order required. *Free shipping.

Units: 12/case

Case cost: \$175.00



Product code: SP245HS Order #: 1000031145/19

This is a 24X5 Professional dust mop. Our dust mops are constructed for intensive laundering and use. These dust mops are pre-laundered and ready to use.

Units: 12/case

Case cost: \$165.00

Product code: SP305HS Order #: 1000031147/23

This is a 30x5 Professional dust mop. Our dust mops are constructed for intensive laundering and use. These high performance dust mops are pre-laundered and ready to use. No minimum case order required.

*Free shipping.

Units: 12/case

Case cost: \$143.32



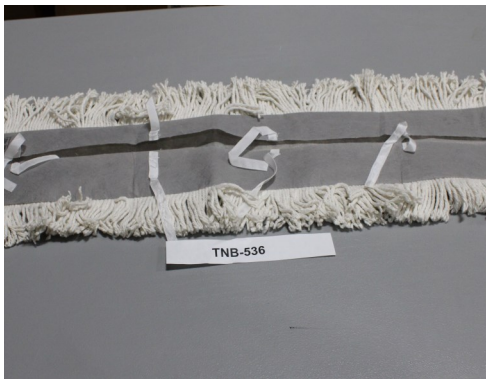
DUST MOPS

Product code: TNB-524 Order #:1000032435/39

24x5 Nontreated disposable dust mop. Ideal when laundering is not an option. Made with cotton/synthetic blend with a Typar backing.

Units: 1/each

Cost: \$10.86



Product code: TNB-536 Order #: 1000032436/38

36x5 Nontreated disposable dust mop. Ideal when laundering is not an option. Made from cotton/synthetic blend with a Typar backing.

Units: 1/each

Cost: \$13.20

Product code: TNB-548 Order #: 1000032437/37

48 X 5 Nontreated disposable dust mop. Highly effective and economical. Ideal when laundering is not an option. Open-back construction with ties. Made from cotton/synthetic blend with a Typar backing.

Units: 1/each

Cost: \$17.25



Product code: SP725HS

72 x 5 dust mop. Great for gym floors and large rooms. Can be laundered and reused. 6/case

Units: 6/ Case

Cost: \$245.50

DUST MOPS



Product code: GR365

36 x 5 Microfiber blend dust mop. Can be laundered and reused. Air Dries 100 % overnight. 12/Case

Units: 1/ case

Cost: \$175.00

Product code: GST-ACB18CITB

Golden Star 18 x 5 Infinity Twist dust mop. Patented yarn won't fray or unravel. 12/case



Units: 1/ case

Cost:\$105.00

Product code: GST-ACB485-CITBB

Golden Star 48 x 5 Infinity Twist dust mop. Patented yarn won't fray or unravel. 6/case



Units: 1/ case

Cost: \$105.95

Product Code: SP185HS Order #: 1000031896/27

This is a 18x5 dust mop. It is made with synthetic blend yarn to allow for more effective dry mopping. Air dries 100% overnight.

Units: 12/case

Case cost: \$146.00



DUST MOPS

Product code: SP185HSE

Economy 24x 5 dry dust mop made of 4-ply blended yarn. Launderable for multiple uses.

Units: 1/ each

Cost: \$14.75



Product code: TUST245HS

24 x 5 White Keyhole style dust mop. Made from 4-ply cotton yarn with synthetic backing. 12/case

Units: 1/ case

Cost: \$165.00

Product code: WEDGE MOP 1010

The 1010 Wedge mop is ideal for smaller rooms or smooth areas under furniture. Tufted natural cotton blended yarn.

Units: 1/ each

Cost: \$9.95



“Utilizing Talents”

Each individual has a unique and specific combination of skills, abilities, and characteristics that makes them a valuable, potential contributor to the general workforce. The State Use Program is dedicated to ensuring that all individuals get equal opportunity to display and utilize their talents in programs that provide growth and learning.

DUST PANS



Product code: DUST PAN #1 Order #: 1000033279/53

Lobby style dust pan with handle 11 1/2" wide

Units: 1/each

Cost: \$11.25

Product Code: Clean X Dustpan 2423231

17" Dust pan with shark teeth on both sides to clean broom head. Back saver step on.

Units: 1/each

Cost: \$10.25



Product code: Impact Value Plus Dustpan

Dustpan for efficient pick-up of dust and dirt. 4"H x 12"W x 11"D

Units: 1/each

Cost: \$9.95

Product code: CON-912BK

Continental 912BK 12" x 10" x 6" Black Dustpan with 36 1/2" handle. Snap-locks in place and releases easily to carry or dump out the hopper.

Units: 1/each

Cost: \$25.18



DUST PANS

Product code: DUSTPAN WITH WHEELS

Rubbermaid, wheeled, vinyl-coated dust pan with superior durability and ergonomic safety features. Will not stain, discolor or absorb odors.

Units: 1/ each

Cost: \$25.50



Product code: IMP-2600

Impact easy lock 2-way handle, new broom cleaning teeth on yoke lobby dust pan. 37"H x 12"W x 11"D

Units: 1/ each

Cost: \$25.18

Product code: 12" STEEL Dustpan

12" Steel dust pan, black with a 2" handle

Units: 1/ each

Cost: \$14.99



NOTES _____

DUSTERS



Product code: Duster Refill

Swiffer duster multi-surface heavy duty refills, 11/box

Units: 1/ Box

Cost: \$19.99

Product code: Impact 3110 Polywool duster

23" White handle multi colored duster. Non allergenic Poly-wool that is fully washable. Metal handle with a white plastic coating and flexible head. Colors may vary.



Units: 1/each

Case cost: \$11.96

Product code: S83EPPD

S83EPPD lambskin synthetic duster with polypropylene fibers. Extends to 83" with a 13.5" pom and flexible head



Units: 1/ each

Cost: \$12.25

Product code: 6FT SWIFFER DUSTER

6FT Swiffer duster 360 extender with 4 refills. Allows you to reach more area and trap up to 3x more dust and allergens.

Units: 1/ each

Cost: \$19.50



FRAMES

Product code: MIC50-18 Order #: 1000031981/29

Aluminum mop pad frame with swivel connector & Velcro strips 18"

Units: 1/each

Cost: \$23.75



Product code: FMM36 Golden Star HD Frame

Golden Star HD Frame 5"x36" is a lightweight structure that provides easy maneuvering with its 360 swivel on flat surfaces. End caps protect walls and furniture.

Units: 1/ each

Case cost: \$23.75

Product code: MIC50-24 Order# 1000033132/50

24" Aluminum mop pad frame with swivel connector and Velcro strips.

Units: 1/each

Cost: \$18.50



Product code: QCF185

QCF185 Quick Change dust mop frame 18x5 for swivel snap.

Units: 1/each

Case cost: \$8.99

FRAMES



Product code: QCF245

QCF245 Quick change dust mop frame 5x24 for swivel snap.

Units: 1/each

Case cost: \$8.99

Product code: QCF305

QCF305 Quick change dust mop frame 5x30 for swivel snap



Units: 1/each

Case cost: \$8.99

Product code: QCF365

QCF365 Quick change dust mop frame 5x36 for the swivel snap handle.



Units: 1/each

Case cost: \$9.99

Product Code: QCF485

QCF485 Quick change dust mop frame 5x48 for the swivel snap.



Units: 1/each

Case cost: \$9.99

Product code: QCF725

QCF725 Quick change dust mop frame 5x72 for swivel snap



Units: 1/ each

Cost: \$12.25

**Product code: NO. 26 HANDLE**

No. 26 taper threaded handle. 1 1/4" x 60".

Units: 1/ each

Cost: \$15.75

Product code: MIC55-01 Order #: 1000031982/28

This is an aluminum telescopic handle that extends to 72" for microfiber mop frames.



Units: 1/each

Cost: \$22.50

**Product Code: LF60 Order #: 1000032942/46**

Screw on wet mop handle. Fits PT16R and PT20R wet mops. 1 1/8" x 60"

Units: 1/each

Cost: \$11.45

HANDLES



Product code: J60 Order# 1000032943/45

Jaws style wet mop handle, 1 1/8" x 59 1/2" handle, wood,

Units: 1/each Cost: \$13.82

Product code: WHEEL60 Order #: 1000032944/44

Wheelock wet mop handle, overall size 1 1/8" x 61 1/2" wooden handle

Units: 1/ each

Cost: \$16.56



Product code: WHEEL60FY Order #: 1000032973/43

Wheelock style fiberglass wet mop handle. Overall size 1" x 63"

Units: 1/each

Cost: \$18.26



Product code: QCH60 Order #: 1000033625/56

Quick change dust mop handle, thumb release to change mops easily. One handle fits various frames. Choice of 60" hardwood, plastic coated steel or fiber glass.

Units: 1/Each

Cost: \$12.25

HANDLES

Product code: H-872

Comfortable lightweight replacement handle, wing nut feature securely tightens hold and has a quick release swing bar.

Units: 1/ each

Cost: \$21.95



Product code: LGSA Replacement handle



Replacement handle for LGSA angle broom. Colors vary. (Black & white)

Units: 1/ each

Cost: \$9.50

Product code: WG60 Order #: 1000032941/48

Wide grip spring action wet mop handle. Used with wide or narrow band mops. Wood handle 1 1/8" x 62 1/2"

Units: 1/each

Cost: \$18.25



Product Code: BW125 Order #:LINE 65

Boardwalk precision-cut tapered end broom handle, lacquered wood, 1 1/8 x 60

Units: 1/each

Cost: \$8.50



HANDLES



Product code: TW100 HANDLE

TW100 wood handle for angle brooms. Threaded, 15/16" x 60".

Units: 1/ each

Cost: \$18.26

Product code: WEDGE MOP 1030

The 1030 Wedge mop fits our 1010 Wedge dust mop heads.



Units: 1/ each

Cost: \$13.25



Product code: WHEEL60M

WHEEL60M—wheel lock plastic coated steel wet mop handle. (color may vary)

Units: 1/ each

Cost: \$18.26

Product code: G3883358

Order #: LINE 61

Black, Steel metal handle, 15/16" diameter with metal tip Ac-me tread. For use with masonry, roof brushes, street brooms, squeegees, floor and deck brushes

Units: 1/each

Cost: \$14.99



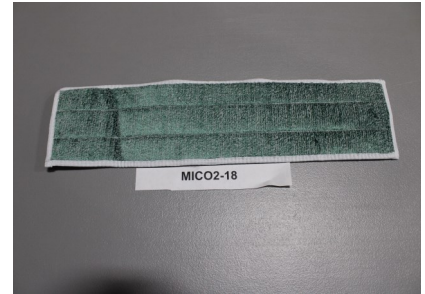
MOP PADS

Product code: MIC02-18 Order #: 1000031980/30

Green twist yarn microfiber 18" dry mop pad with foam core

Units: 12/case

Case cost: \$74.50



Product code: MIC01-18 Order #:1000031983/32

Wet microfiber scrubbing/cleaning mop pads with foam core, 18" blue,

Units: 12/case

Case cost: \$48.50



Product code: SWIFFER XL WET CLOTHS

12-Count Swiffer XL wet cloth refills.

Units: 1/ each

Cost: \$16.95



Product code: AMM18ZZGGF

EVS Microfiber dry mop, extra fringe picks up particles and debris, includes two layers of long lasting microfiber cloth and one non woven inside layer. 12/case

Units: 1/ case

Cost: \$142.50



MOP PADS

Product code: AMM24GCUT

18" Microfiber Gray backing with fringe dust mop pad.
Great for hardwood, tile and concrete floors. Made to be reused and laundered many times.

Units: 1/ case

Cost: \$125.95



Product code: AMM18HDBWGRS

HD Microfiber scrubber mop pad, strong scrubber strips are ideal for removing scuffs or areas that need aggressive cleaning. 12/case

Units: 1/ case

Cost: \$180.00



Product code: AMM36ZZGGF

EVS Microfiber dry mop, extra fringe picks up particles and debris, includes two layers of long lasting microfiber cloth and one non woven inside layer. 12/case

Units: 1/ case

Cost: \$235.50



Product code: AMM24GCUT

24" Microfiber Gray backing with fringe dust mop pad.
Great for hardwood, tile and concrete floors. Made to be reused and laundered many times without losing its effectiveness. 12/case

Units: 1/ case

Cost: \$175.00



MOP PADS

Product code: AMM24HDBD

Golden Star 24" heavy duty blue wet mop with fringe microfiber pad.

Units: 1/ case

Cost: \$175.00



Product code: AMM24HDBWGRS

24" HD Microfiber scrubber mop pad, strong scrubber strips are ideal for removing scuffs or areas that need aggressive cleaning. 12/case

Units: 1/ case

Cost: \$195.00



Product code: AMM36HDBW

36" Microfiber wet mop pad. 12/case

Units: 1/ case

Cost: \$86.30



Product code: BWKMFKIT

Boardwalk microfiber mopping kit. 18" mop head, 35-60" handle blue/green/gray

Units: 1/ each

Cost: \$75.00

MOP PADS



Product code: MEGA 22 BLUE

Mega mop pad, 8x22, fits MIC frames. Blue edging.
12/case

Units: 1/ case

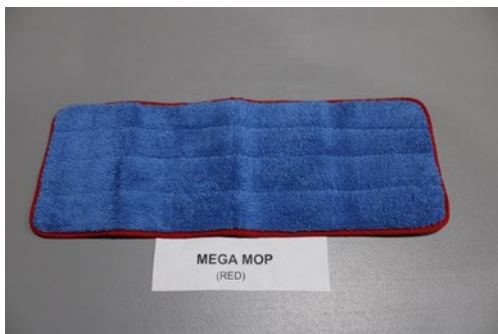
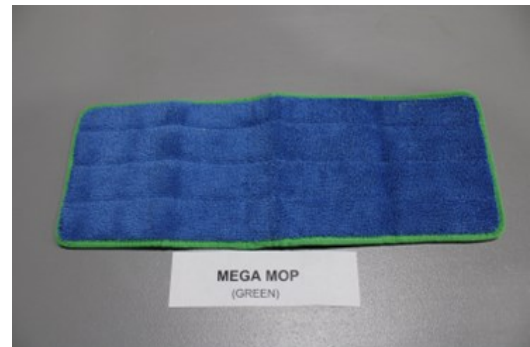
Cost: \$74.50

Product code: MEGA 22 GREEN

Mega mop pad, 8x22, fits MIC frames. Green edging.
12/case

Units: 1/ case

Cost: \$74.50



Product code: MEGA 22 RED

Mega mop pad, 8x22, fits MIC frames. Red edging.
12/case

Units: 1/ case

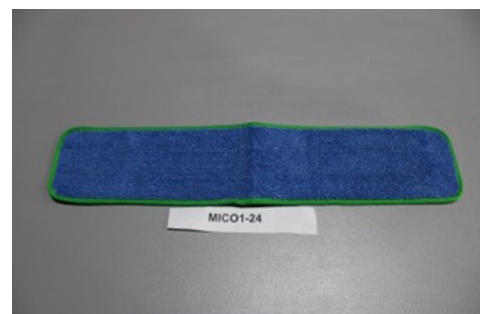
Cost: \$142.50

Product code: MIC01-24

24" Blue wet, microfiber dusting mop pad with foam core. Made from a synthetic blend of nylon and polyester polyamide. 12/case

Units: 1/ case

Cost: \$74.50



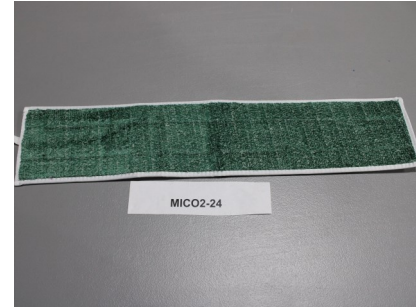
MOP PADS

Product Code: MIC02-24 Order #: 1000033133/51

24" Green dry, microfiber dusting mop pad with foam core. Made from a synthetic blend of nylon and polyester polyamide.

Units: 12/case

Case cost: \$74.50



Product code: PFI1862845

Microfiber pad with synthetic scrubber strips easily removes stubborn spots and dried on foods. Vertical strips reach into tile grout lines. 12/case

Units: 1/ case

Cost: \$133.25



Product code: SWIFFER SWEEPER STARTER KIT

Swiffer sweeper XL starter kit, 1 sweeper, 8 dry pads & 2 wet pads.

Units: 1/ case

Cost: \$25.50



Product code: SWIFFER DRY XL

Swiffer Heavy Duty XL dry cloth refills. 10/count

Units: 1/ case

Cost: \$15.75



SHANK FREE



Product Code: 6025-24 Order #: 1000032126/35

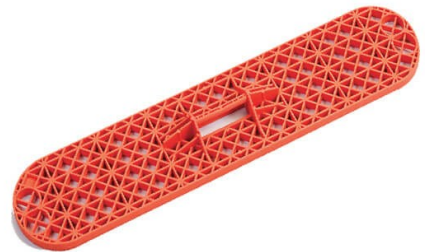
24x5 shank free dust mop frame, made of rubbery plastic that eliminates the ability to be sharpened Metal free & durable

Units: 4/case

Case cost: \$99.99

Product code: 6025-36 Order #: 1000032127/34

36x5 shank free dust mop frame, made of rubbery plastic that eliminates the ability to be sharpened Metal free & durable



Units: 4/case

Case cost: \$152.12



Product code: 6031E-PL56 Order #: 1000032128/33

Jail safe shank free dust mop handle with clip, made from rubbery plastic which eliminates the ability to be sharpened. Metal free & durable

Units: 4/case

Case cost: \$157.00

Product code: 6010 Order #: 1000033278/52

Orange shank free dust pan, custom molded from a special polymer that eliminates the ability to be sharpened into a weapon. If abused, dust pan will bend under stress

Units: 1/each

Cost: \$12.25



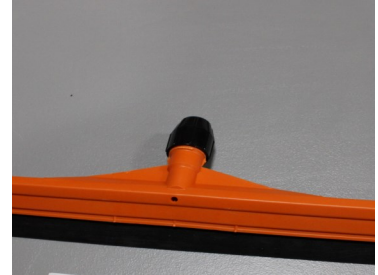
SHANK FREE

Product code: 6024-24 Order #: 1000033624/55

24" Shank Free and Metal Free Squeegee made from a special rubbery plastic that eliminates the ability to be sharpened into a shank or weapon

Units: 1/each

Case cost: \$32.49



Product code: 6022-24 Push broom head

24" Shank free, metal free push broom head made from a specialized rubbery plastic that eliminates the ability to be sharpened into a shank or weapon.

Units: 1/each

Case cost: \$85.50

Product code: 6042-PL56

Plastic Handle with 6210 flexible short tip, shank free

Units: 1/ each

Cost: \$36.25



Product code: 6044-PL56

Shank Free easy sweep broom handle, 100% metal free. Used in most correctional facilities.

Units: 1/ each

Cost: \$38.50

SHANK FREE



Product Code: 6046-F56

Shank free squeegee handle

Units: 1/each

Case cost: \$32.50

Product code: 6052C-F56 Order #: LINE 62

Shank free quick bite wet mop holder with panther pole handle. Pole will shatter and bend under high impact. Eliminates the ability to be sharpened into a shank.

Units: 1/each

Cost: \$25.50



Product code: 6052-PL56 Order #: LINE 63

Briarwood shank free quick bit wet mop holder—safety orange. Made from a rubbery plastic that eliminates the ability to be sharpened into a shank. Locking feature prevents it from opening when bumped into baseboards or furniture.

Units: 1/each

Cost: \$30.25

Product code: 6021-F Order #: LINE 72

Shank free easy sweep angle broom head. No metal or Staples. Bristles are fused onto block. Kinetically amalgamated.

Units: 1/ each

Cost: \$32.50



“Empowering Individuals”

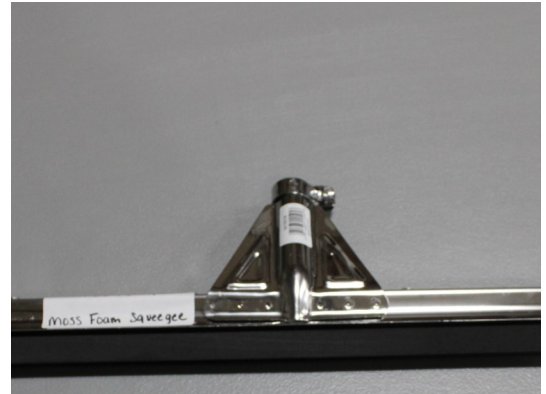
Every person deserves the right to independence, choice, and opportunity. The Oklahoma State Use Program provides a platform for which individuals are able to use their employment to help achieve those basic goals. A collaborative effort by the state and the business community to include all people in its plans and initiative; can, will and is changing the lives of individuals every single day.

Product code: M10018

18" Black Double Moss floor squeegee. Soft double foam for uneven, rough and smooth surfaces. Ideal for markets, warehouse and foodservice facilities. Double blade is 3/4" thick. Uses standard 15/16" diameter handle.

Units: 1/each

Case cost: \$19.50



Product code: RDA-M10030

30" soft durable foam rubber for uneven, rough and smooth surfaces. Double thick blade is 3/4" thick. Fits a standard 15/16" diameter handle.

Units: 1/ each

Cost: \$29.50



Product code: RDA-22222 Moss Rubber Squeegee

Thick black moss rubber blade leaves floors dry. Durable 22" white plastic frame has splash guard and is molded with threaded handle neck. Frame is strong and easy to clean.

Units: 1/each

Case cost: \$18.50



WAX MOPS



Product code: EZMWB Order: 1000031984/31

Monofilament 16-20 oz looped end wet mop

Units: 12/case

Case cost: \$150.25

Product code: ECC424-SF Order #: 1000033130/49

Candy cane looped end wax mop is ideal for the final touch on your floors. Durable vinyl-coated polyester mesh center band.



Units: 12/ each

Case cost: \$139.00



WET MOPS

Product code: ES4XL-WF

24 oz. White economy x-large looped end wet mop.
Fan tailed. 12/Case

Units: 1/ each

Cost: \$115.00



Product code: ASB5XL-WF Order #: 1000030790/17

This is a 24 oz. (Economy x-large), Looped end, tail banded, endurance wet mop. These mops are made with blue blended yarn and a 5" green head band; Able to withstand multiple washings for longer use.

Units: 12/case

Case cost: \$115.00



Product code: GST-ASB5XLG

Green—24 oz economy wet mop, 5" headband,
looped end. 12/case

*REPLACED EDG4XL

Units: 1/ case

Cost: \$115.00



Product code: ASB5L Order #: 1000030791/16

This is a 20 ounce economy, Looped end, tail banded, endurance wet mop. Made with blue blended yarn and a 5" red head band; Able to withstand multiple washings for longer use

Units: 12/case

Case cost: \$105.50



WET MOPS



Product code: ES4L-WF

20 oz White, economy wet mop, looped end, fan tailed. 12/Case

Units: 1/ each

Cost: \$105.50

Product code: E424-WF Order #: 1000030792/15

This is a 24ounce (Premium, x-large), Looped end, tail banded, endurance wet mop. These mops are made with white blended yarn and a 5" green head band; Able to withstand multiple washings for longer use.

Units: 12/case

Case cost: \$135.50



Product code: E420-WF Order #: 1000030793/14

This is a 20 ounce (Premium, x-large), Looped end, tail banded, endurance wet mop. These mops are made with white blended yarn and a 5" red head band

Units: 12/case

Case cost: \$125.00

Product code: MEB420-WF Order #: 1000031142/22

This is a 20 ounce (Premium, x-large), Looped end, tail banded, endurance wet mop. These mops are made with white blended yarn and a 5" red head band

Units: 12/case

Case cost: \$135.00



WET MOPS

Product code: MEB424-WF Order #: 1000031143/21

This is a 24 ounce Premium Looped end, tail banded, endurance wet mop. These mops are made with white blended yarn and a 5" red head band

Units: 12/case

Case cost: \$175.00



Product code: ER424-WF Order #: 1000031176/24

This is a 24 oz. Rayon Wet mop. Our Rayon wet mop is perfect for liquid application. Rayon keeps chemicals and disinfectants on the floor longer, which is significant in health care facilities. Mildew resistant White only. No minimum case order required. *Free shipping.

Units: 12/case

Case cost: \$139.00



Product code: EB416-WF Order #: 1000031431/25

This is a 16 oz. looped end, blue wet mop. These high performance wet mops are pre-laundered and ready to use.

*Free shipping. Image for reference only dust mops are white

Units: 12/case

Case cost: \$105.00



Product code: E428-WF Order #: 1000031432/26

This is a 28 oz. wet mop. These high performance wet mops are pre-laundered and ready to use. 5 inch head band

Units: 12/case

Case cost: \$135.00



WET MOPS



Product code: F8011 Order: 1000032567/40

Roller sponge mop with 9" head and handle.

(WHILE STOCK LAST, MANUFACTURER DISCONTINUED)

Units: 1/each Cost: \$11.86

10032568/41—F8011R—REFILL HEADS—\$4.30 EACH

Product Code: G416-S Order #:1000032941/48

16 oz. disposable cut end wet mop. Economical multi-purpose mop. 12/case



Units: 1/case

Case cost: \$60.80

Product code: MEB428-WF Order #: 1000032945/47



Blue, microfiber 28 oz. wet mop with a 5" headband

Units: 1/each Cost: \$14.11

Product code: AST24LDPS5

24 oz. White Starborne looped end wet mop, pre shrunk. Heavy 4-ply blend of cotton, rayon and polyester provides excellent absorbency. 12/Case

Units: 1/ each

Cost: \$115.50



WET MOPS



Product code: AST32_XLDPS

32 oz Starborne looped end wet mop, pre shrunk. Heavy 4-ply blend of cotton, rayon and polyester provides excellent absorbency. 6/case

Units: 1/ case

Cost: \$107.85

Product code: E412-WF

12 OZ. Lightweight Endurance looped end wet mop. Constructed with one continuous strand of yarn. Can be laundered for maximum product life. 12/case

Units: 1/ case

Cost: \$95.00



Product code: ECB420-SF

20 OZ. Antimicrobial looped end wet mop with built in protection that inhibits the growth of bacteria, fungi, molds and mildew. 12/case

Units: 1/ case

Cost: \$102.50



Product code: PT20R

20 oz Rayon screw on wet mop heads. Made with rayon blended yarns. 12/case

Units: 1/ case

Cost: \$92.25



WET MOPS



Product code: GST-AEW3220

20 OZ. Screw on Rayon wet mop with male attachment.
Picks up finish an evenly releases it for a smooth finish.
12/case

Units: 1/case

Cost: \$122.50



People First Industries of Bryan County, Inc.

We believe every little bit counts, our mops contain the highest percentage of recycled content of any mop manufacturer in the business. We are consistently looking for ways to refine the manufacturing process to both reduce and re-use waste whenever possible. By utilizing a vertically integrated manufacturing system we are able to provide the most ecofriendly products while maintaining excellent performance and durability. This is our commitment to the planet, to quality and to you.

“Satisfying Needs”

The Oklahoma State Use Program provides a means for individuals with disabilities, who otherwise would not have the opportunity to go to work. The benefits do not stop with the individuals; the state receives goods and services provided; local communities gain additional commerce and an increased tax base; the general industry gains an increase in trained, capable, and proficient workers.

“Satisfying Needs”

The Oklahoma State Use Program provides a means for individuals with disabilities, who otherwise would not have the opportunity to go to work. The benefits do not stop with the individuals; the state receives goods and services provided; local communities gain additional commerce and an increased tax base; the general industry gains an increase in trained, capable, and proficient workers.

[illegible]